

REPAIR PARTS CATALOG



WL FOLDING PULVI-MULCHER

21'-8" & 25'-0"

Serial No. 154801 and beyond

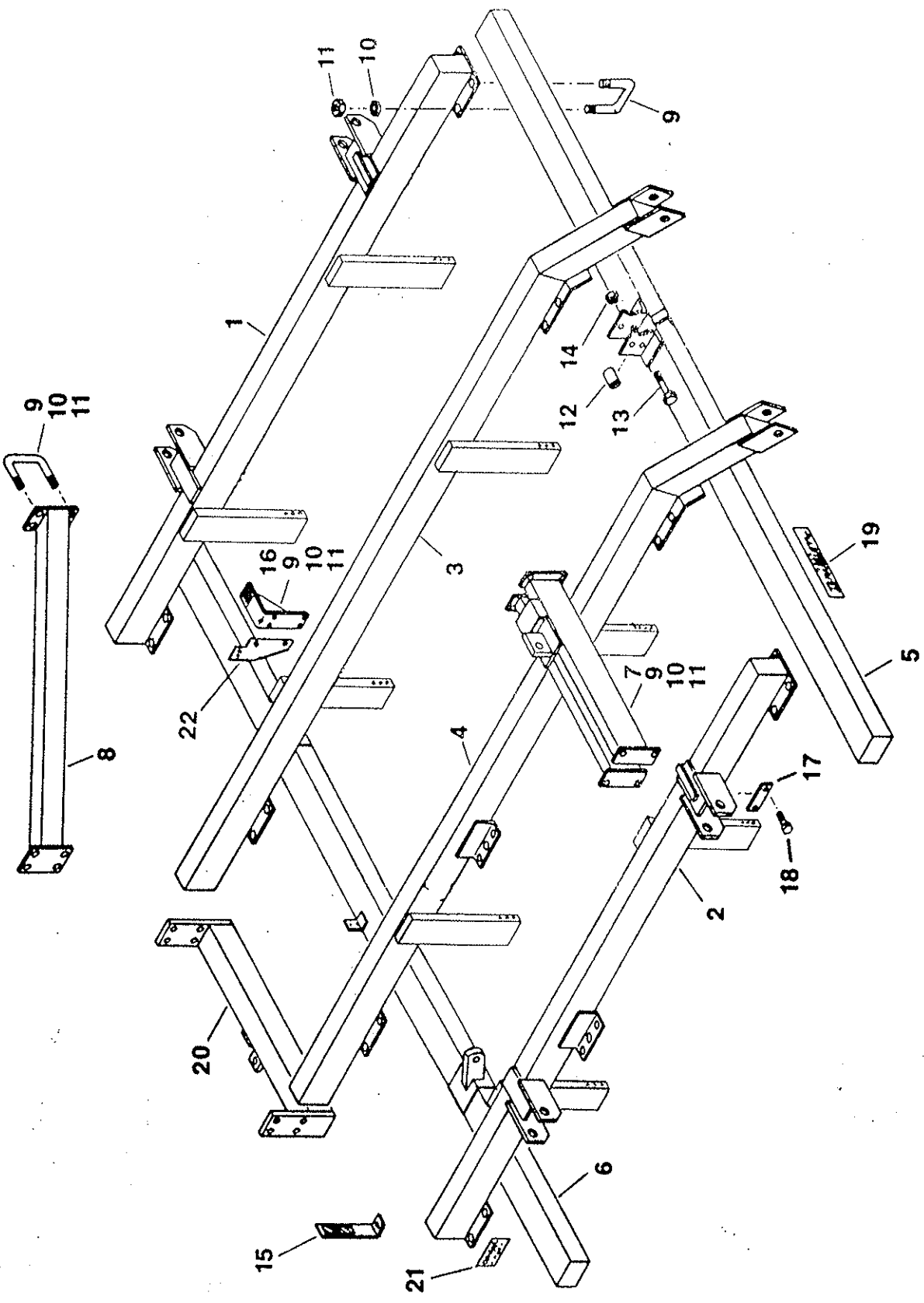
IMPORTANT! Repairs cannot be purchased retail direct from factory. Order through your Brillion dealer.

MODEL NO.
DATE PURCHASED



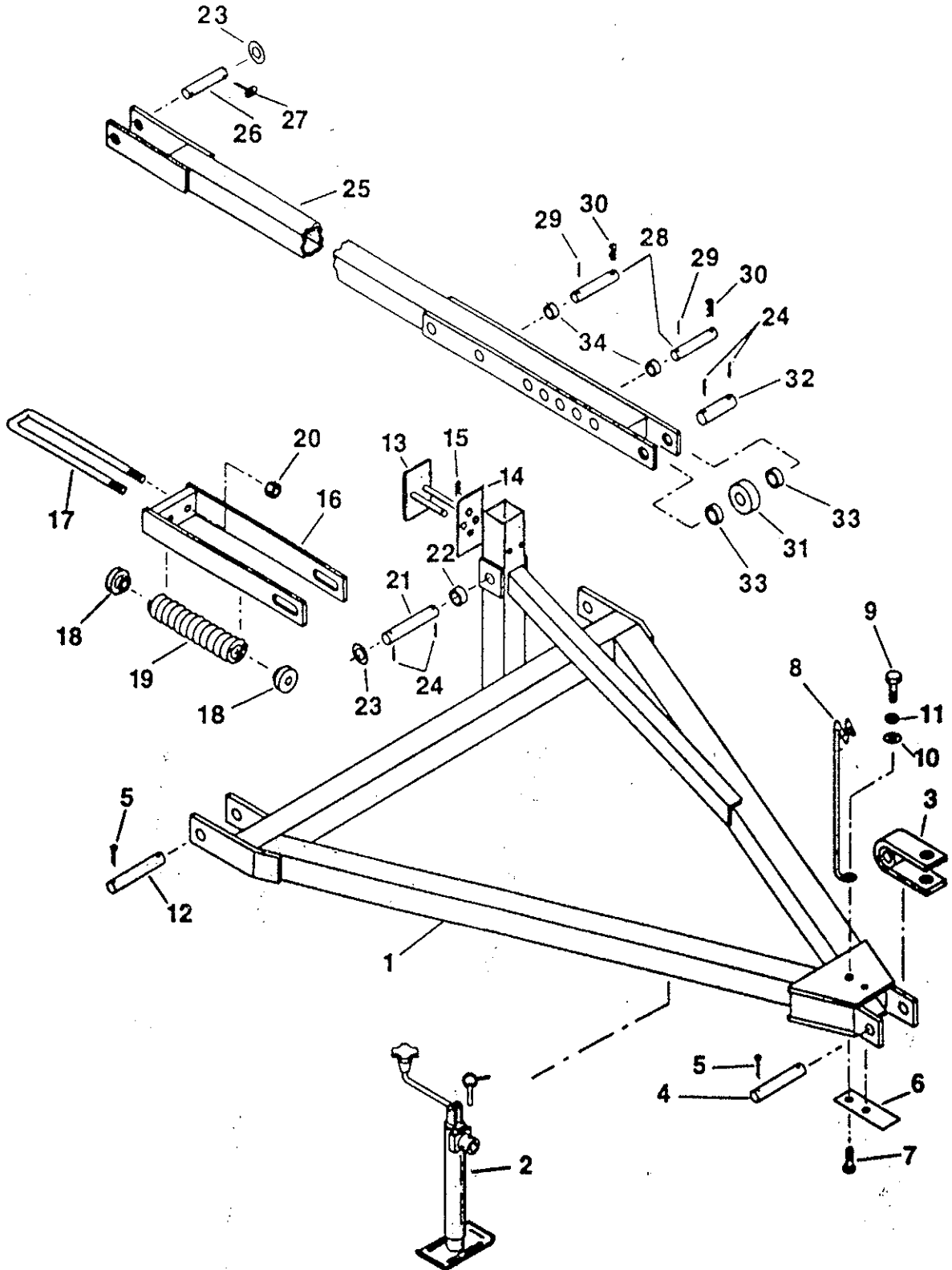
BRILLION IRON WORKS, INC.
BRILLION, WISCONSIN 54110

FRAME (CENTER SECTION)



FRAME (CENTER SECTION)				
Index No.	Part #	Description	No. Used	Weight
1	9J-126	Left Outer Frame Tube	1	238
2	9J-127	Right Outer Frame Tube	1	238
3	9J-101	Left Inner Frame Tube	1	210
4	9J-102	Right Inner Frame Tube	1	215
5	8J-900	Front Tube	1	224
6	8J-593	Rear Tube	1	182
7	8J-570	Cylinder Bracket	2	80
8	8J-591	Brace	2	42.5
9	7J-990	U-Bolt, 5/8"		1.2
10	1B-166	Lock Washer, 5/8"		--
11	1C-392	Nut, 5/8"		.1
12	8J-118	Spacer, 1/2" I.D.x3" long	1	.3
13	5D-142	Cap Screw, 1/2"x5" long	1	.3
14	5C-392	Stover Lock Nut, 1/2"	1	--
15	9J-093	Decal Bracket, w/Decals	2	1.6
	2J-430	Decal Only, Red	2	--
	2J-431	Decal Only, Amber	2	--
16	8J-632	Wing Stop	2	6.0
17	8J-653	Shim	8	.6
18	1C-216	Cap Screw, 1/2"x1-3/4" long	8	.1
19	1J-910	Decal, "BRILLION" Script	4	--
20	8J-051	Rear Hitch (Optional)	1	68
	6D-355	Machine Bolt, 5/8"x6" long	8	.6
	1B-166	Lock Washer	8	--
	1C-392	Nut, 5/8"	8	.1
21	3J-675	"DANGER" Decal	4	--
22	9J-187	Bracket (Relief Valve Mounting)	1	2.3
	2J-751	Capscrew, 1/4 x 2 1/2"	2	--
	1C-354	Lock Washer, 1/4"	2	--
	1C-355	Nut, 1/4"	2	--

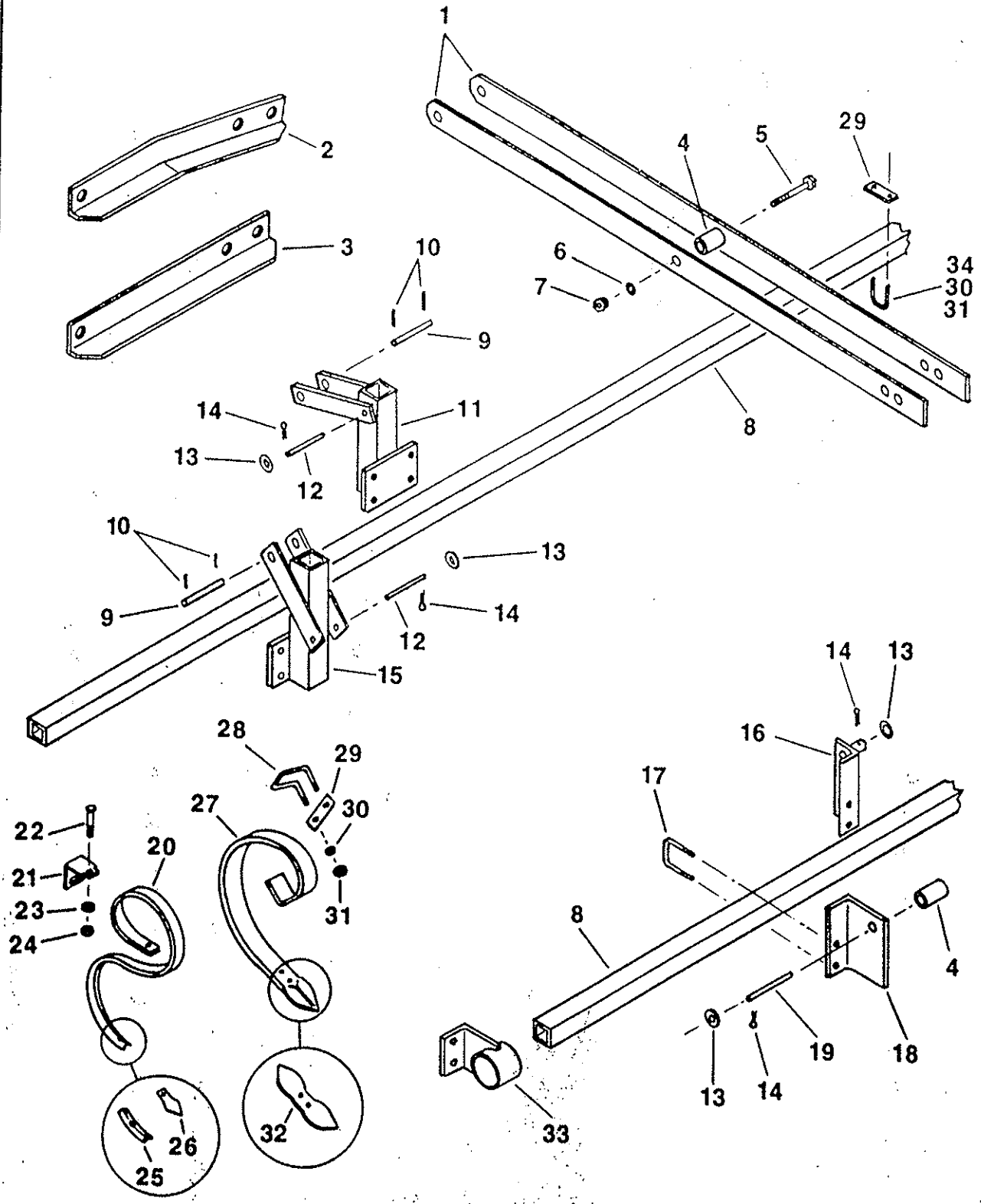
DRAWBAR



DRAWBAR

Index No.	Part #	Description	No. Used	Weight
1	8J-086	Drawbar	1	151
2	3J-880	Jack	1	19.0
3	6D-879	Hitch Clevis	1	8.0
4	6D-944	Pin, 1" x 6-1/4"	1	1.3
5	4C-446	Cotter Pin, 1/4" x 1-1/2"	6	0.02
6	6D-865	Flat Spring	1	0.2
7	1C-232	Cap Screw, 3/8" NC x 1-1/4"	2	0.05
	1C-182	Flat Washer, 3/8"	1	0.01
	1C-183	Lock Washer, 3/8"	2	0.01
	1C-277	Nut, 3/8" NC	2	0.03
8	6D-333	Hose Support	1	1.8
9	5C-460	Cap Screw, 5/8" NC x 2"	1	0.23
	5C-461	Stover Nut, 5/8" NC	1	0.08
10	5C-907	Flat Washer, 5/8"	1	0.03
11	1B-166	Lock Washer, 5/8"	1	0.02
12	8J-130	Pin, 1" x 6-3/4"	2	1.5
13	8J-113	Bumper	1	2.5
14	8J-903	Spacer	6	1.3
15	6C-400	Hair Pin Cotter, 3/32" x 1-7/8"	2	0.01
16	8J-104	Spring Linkage	1	13.5
17	8J-163	U-Bolt	1	3.0
18	6J-459	Spring Cap	4	1.0
19	6J-460	Spring	2	4.0
20	5C-461	Stover Nut, 5/8" NC	2	0.08
21	6J-045	Pin, 1" x 7-1/2"	1	1.7
22	8J-212	Spacer, 1" I.D. x 11/16"	2	0.10
23	1C-871	Flat Washer, 1" SAE	4	0.08
24	2D-894	Roll Pin, 1/4" x 2"	4	0.02
25	8J-083	Link	1	62.0
26	5J-768	Pin, 1" x 5 1/2"	1	1.2
27	5D-110	Klik Pin, 1/4"	2	0.1
28	6J-580	Pin, 1" x 6-1/2"	2	1.5
29	4C-858	Roll Pin, 5/16" x 2"	2	0.03
30	1D-594	Hair Pin Cotter, 3/16" x 3-9/16"	2	0.06
31	3J-512	Roller Assembly	1	1.6
32	4J-549	Pin, 1-1/4" x 4"	1	1.4
33	8J-085	Spacer, 1-1/4" ID x 11/16"	2	0.13
34	9J-278	Spacer, 1" ID x 1-1/16"	4	0.2

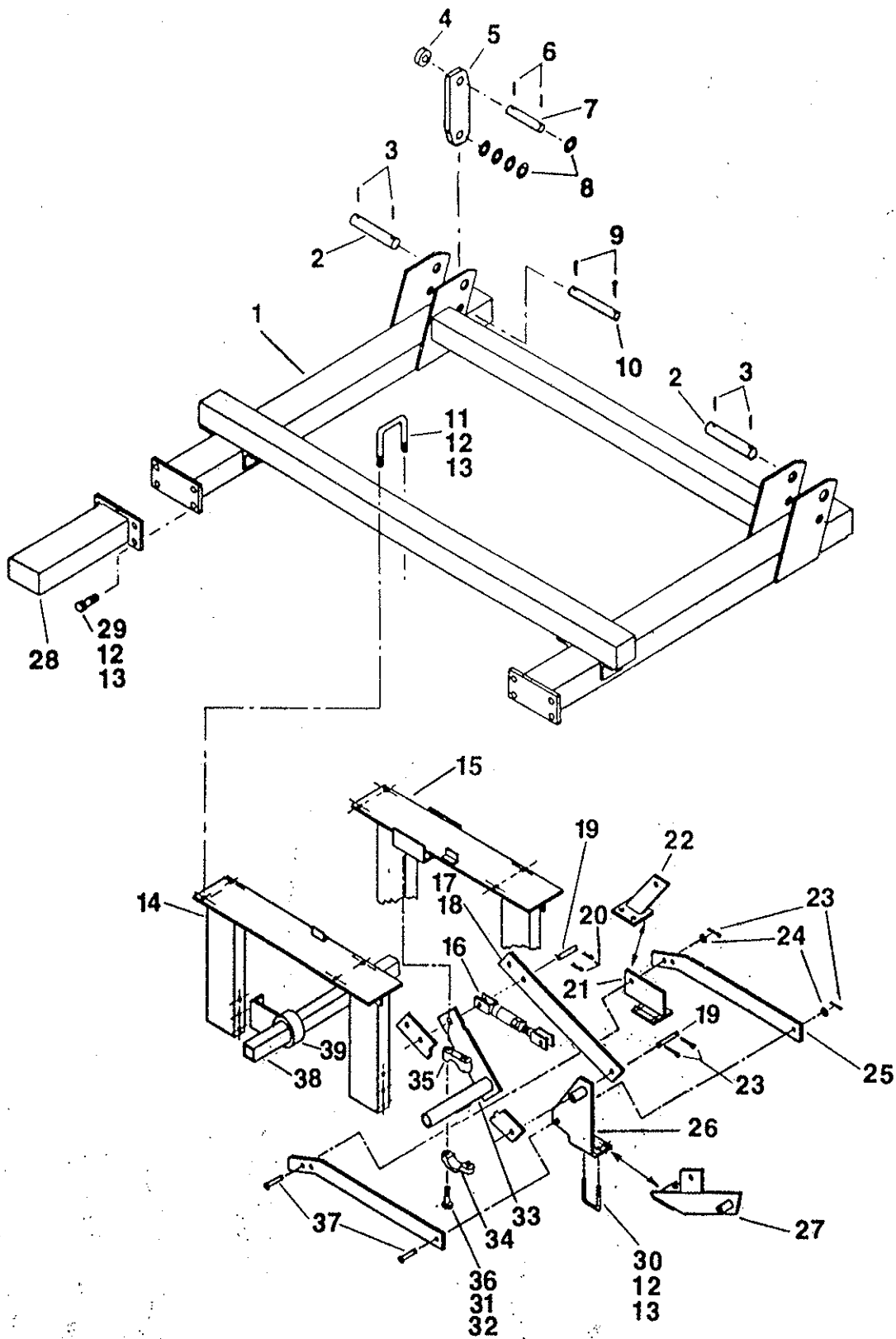
TOOTH, TUBE, & LINKAGE COMPONENTS
 CENTER FRAME



TOOTH, TUBE & LINKAGE COMPONENTS (CENTER FRAME)

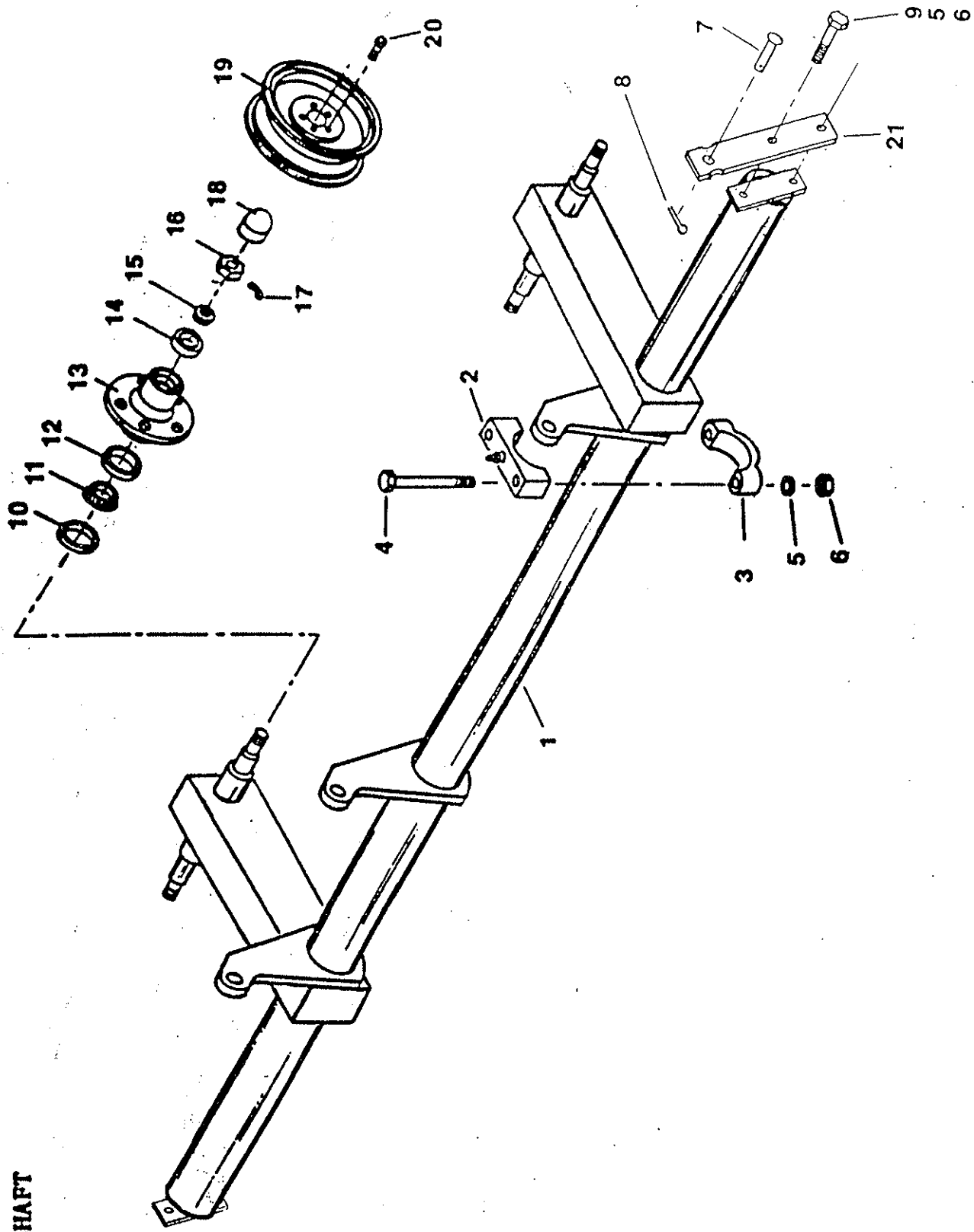
Index No.	Part #	Description	No. Used	Weight
1	9J-121	Strap	2	17.6
2	9J-146	R.H. Link, Shown (C-Teeth)	1	11.7
	9J-145	L.H. Link, Opposite (C-Teeth)	1	11.7
3	9J-144	R.H. Link, Shown (S-Tines)	1	11.5
	9J-143	L.H. Link, Opposite (S-Tines)	1	11.5
4	9J-112	Spacer, 3½" Long		.3
5	1J-558	Capscrew, ¾ x 5"	1	.7
6	1C-211	Lock Washer, ¾"	1	--
7	1C-210	Nut, ¾"	1	.1
8	9J-170	Tooth Tube, 137½" Long	2	49.5
9	5J-768	Pin, 1 x 5½"	2	1.2
10	2J-600	Roll Pin, 5/16 x 1½"	2	--
11	9J-107	Rear Bracket (C-Teeth)	1	17
12	9J-111	Pin, ¾ x 5-5/16"	1	.7
13	2C-458	Washer, ¾" SAE	4	--
14	1C-788	Cotter Pin, 3/16 x 1½"	4	--
15	9J-114	Rear Bracket (S-Tines)	1	19.8
16	9J-120	R.H. Front Bracket, Shown (C-Teeth)	1	4.7
	9J-096	L.H. Front Bracket, Opposite (C-Teeth)	1	4.7
17	2J-094	U-Bolt, 5/8"	4	.7
	1B-166	Lock Washer, 5/8"	8	--
	1C-392	Nut, 5/8"	8	--
18	9J-109	R.H. Angle, Shown (S-Tines)	1	6
	9J-108	L.H. Angle, Opposite (S-Tines)	1	6
19	9J-110	Pin, ¾ x 6-5/16"	1	.8
20	1J-887	S-Tine		6
21	1J-834	Clamp		.8
22	2J-241	Carriage Bolt, 7/16 x 3½", Grade 5		.2
23	1C-314	Lock Washer, 7/16"		--
24	1D-014	Stover Lock Nut, 7/16"		--
25	2J-155	1-3/8" Reversible Point		.7
26	7D-014	2½" Duckfoot Point		.5
	7D-728	Cultivator Bolt, 3/8 x 1-3/4"		.1
	7D-730	Flange Lock Nut		--
27	9D-662	C-Tooth		10.1
28	8J-172	Tooth Clamp		.7
29	5C-078	Clamp Strap		.7
30	1C-109	Lock Washer, ½"		--
31	1C-390	Nut, ½"		--
32	4D-386	Shovel (Used on Worn 9D-662)		1.1
	2C-628	#3 Plow Bolt, 3/8 x 1½"		.1
33	9J-090	Bracket, C-Teeth (3 x 4 Angle)	16	2.9
	9J-091	Bracket, S-Tines (3 x 5 Angle)	16	3.3
34	5D-921	U-Bolt, ½"	14	.5

FRAME (WINGS)



FRAME (WINGS)				
Index No.	Part #	Description	No. Used	Weight
1	8J-614	Wing	2	372
2	8J-652	Hinge Pin, 1½" x 8-3/4"	4	4.3
3	4J-410	Roll Pin, 3/8 x 3"	8	.1
4	3J-512	Roller Assembly	2	1.6
5	8J-637	Lift Link	4	12
6	1J-915	Roll Pin, 3/8 x 2"	4	.1
7	5J-536	Pin, 1½ x 6-5/16"	2	2.2
8	6C-406	Flat Washer, 1½" SAE	20	.1
9	1C-869	Cotter Pin, ½ x 2"	4	--
10	3J-496	Pin, 1½ x 8-3/4"	2	3
11	9D-989	U-Bolt, 5/8"	8	1.3
12	1B-166	Lock Washer, 5/8"		--
13	1C-392	Nut, 5/8"		--
14	9J-141	L.H. Outer Wing Bracket, Shown	1	58.5
	9J-142	R.H. Outer Wing Bracket, Opposite	1	58.5
15	9J-139	L.H. Inner Wing Bracket, Shown	1	65
	9J-140	R.H. Inner Wing Bracket, Opposite	1	65
16	9J-134	Control Link Assembly	2	8.9
	8J-644	Swivel Yoke Only	2	4.5
	9J-133	Screw Weldment Only	2	4.3
	7D-430	Jam Nut, 1"	2	.1
17	9J-151	Link, 24-3/8" LG. (S-Tine Machines)	4	8.3
18	9J-152	Link, 24-3/4" LG. (C-Teeth Machine)	4	8.4
19	7J-067	Pin, 1 x 4"	4	.9
20	1D-594	Hairpin Cotter	4	.1
21	9J-168	L.H. Front Bracket, Shown (S-Tines)	1	5.4
	9J-169	R.H. Front Bracket, Opposite (S-Tines)	1	5.4
22	9J-163	L.H. Front Bracket, Shown (C-Teeth)	1	4.8
	9J-164	R.H. Front Bracket, Opposite (C-Teeth)	1	4.8
23	1C-788	Cotter Pin, 3/16 x 1½"	6	--
24	2C-458	Flat Washer, 3/4" SAE	8	--
25	9J-155	Strap	4	7.6
26	9J-165	L.H. Rear Bracket, Shown (S-Tines)	1	9.3
	9J-166	R.H. Rear Bracket, Opposite (S-Tines)	1	9.3
27	9J-159	L.H. Rear Bracket, Shown (C-Teeth)	1	8
	9J-160	R.H. Rear Bracket, Opposite (C-Teeth)	1	8
28	8J-630	Wing Extension ("3001" Series Only)	4	22
29	4D-561	Cap Screw, 5/8 x 1½" Grade 5	16	.2
30	2J-094	U-Bolt, 5/8"	10	.7
31	1C-109	Lock Washer, ½"	8	--
32	1C-390	Nut, ½"	8	--
33	9J-131	Wing Rock Shaft	2	10.2
34	4C-758	Axle Bearing w/Zerk	4	1.5
35	4C-778	Axle Bearing	4	2.5
36	5D-335	Cap Screw, ½ x 4"	8	.3
37	7D-590	Clevis Pin	4	.3
38	8J-654	Tooth Tube, 56½" ("2601" Series Machine)	4	21.1
	8J-655	Tooth Tube, 68½" ("3001" Series Machine)	4	25.7
39	9J-090	Bracket, C-Teeth (3 x 4 Angle)	16	2.9
	9J-091	Bracket, S-Tines (3 x 5 Angle)	16	3.3

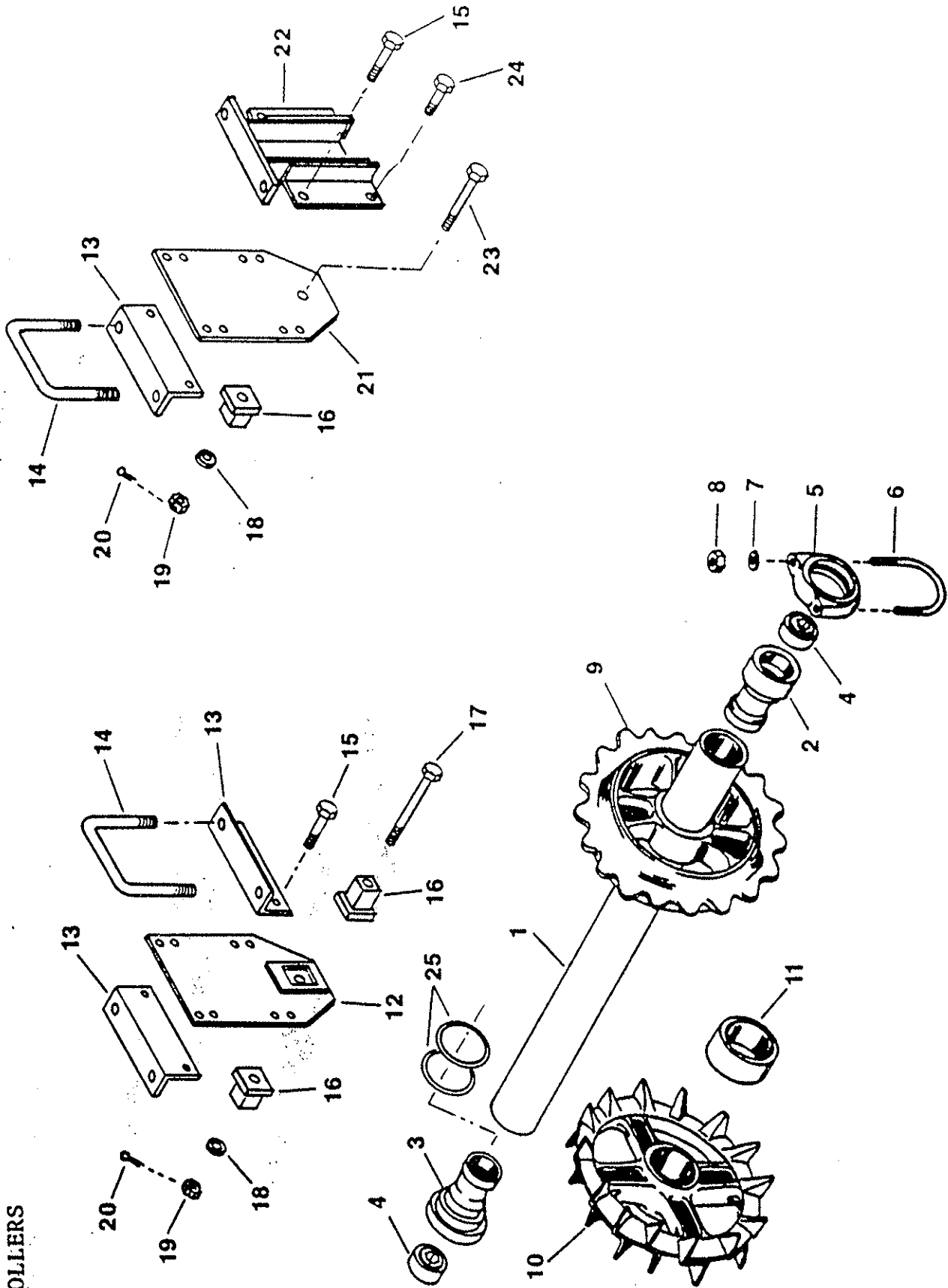
ROCKSHAFT



ROCKSHAFT

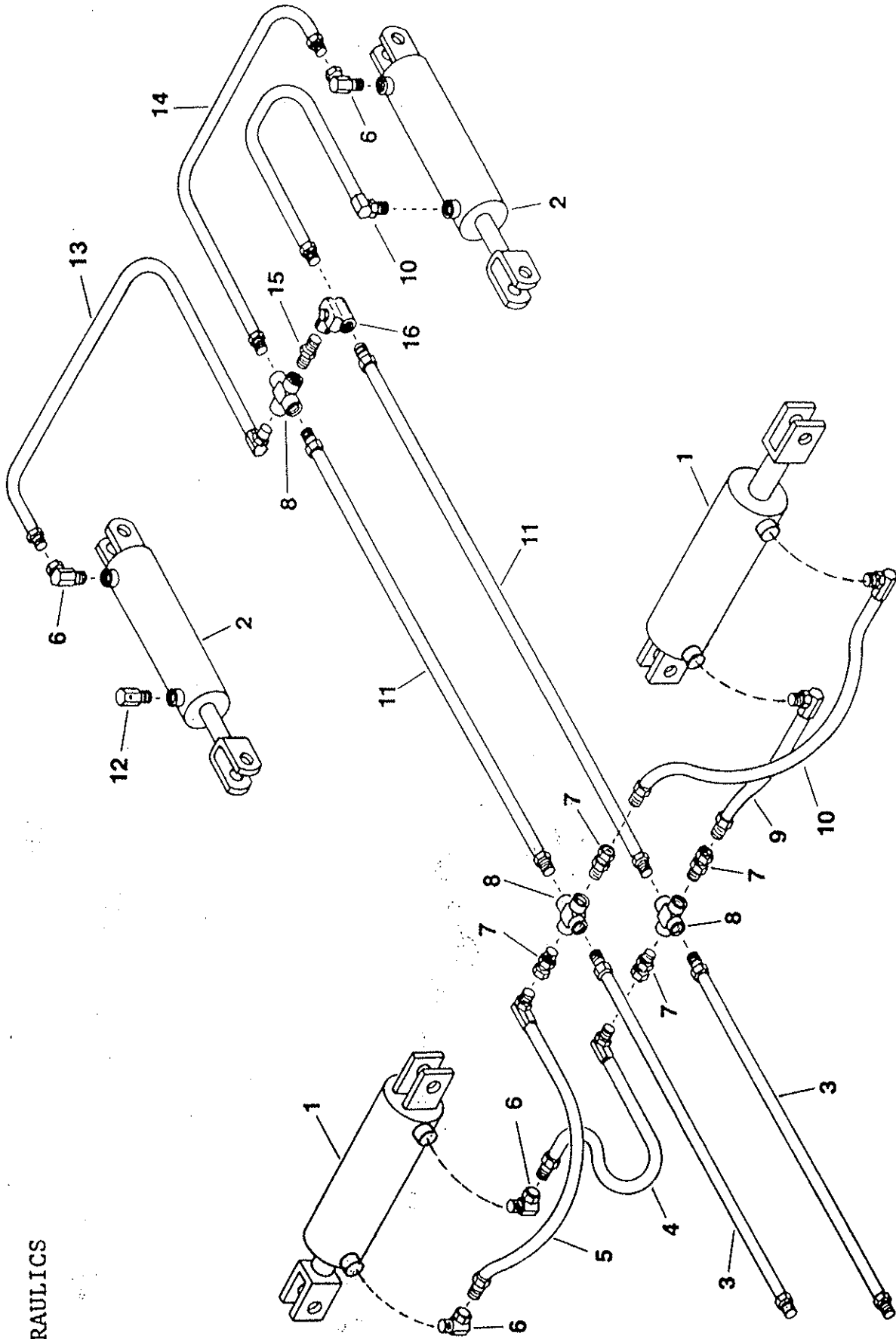
Index No.	Part #	Description	No. Used	Weight
1	9J-099	Rockshaft, Incl. Hubs	1	415
2	9D-653	Bearing, Incl. Lube Fitting	4	8.2
	2C-643	Lube Fitting, 1/8" Pipe Thrd., 1-1/4" long	4	--
3	6D-309	Bearing Cap	4	5.5
	1C-023	Lube Fitting, 1/8" Pipe Drive Thrd.	4	--
4	9C-059	Machine Bolt, 5/8"x7", Gr. 5	8	.6
5	1B-166	Lock Washer, 5/8"	8	--
6	1C-392	Nut, 5/8"	8	.1
7	5D-012	Clevis Pin, 1 x 2 1/4"	2	.5
8	1C-788	Cotter Pin, 3/16"	6	--
9	6D-476	Cap Screw, 5/8 x 2 1/4", Gr. 5	4	.2
10	6D-338	Seal	4	.1
11	5C-480	Bearing Cone #LM48548	4	.2
12	5C-479	Bearing Cup #LM48510	4	.2
13	6D-336	Wheel Hub	4	10.5
14	5C-914	Bearing Cup #LM67010	4	.2
15	5C-913	Bearing Cone #LM67048	4	.2
16	6D-284	Slotted Nut, 1"-14 N.F.	4	--
	1C-871	Flat Washer, 1"	4	--
17	1C-788	Cotter Pin, 3/16"x1-1/2"	4	--
18	6D-337	Hub Cap	4	.8
19	9D-135	Wheel	4	33
20	5C-100	Wheel Bolt	24	.1
21	9J-100	Arm	2	8.5

ROLLERS



ROLLERS				
Index No.	Part #	Description	No. Used	Weight
1	8C-986	Axle w/Bearings, 72-5/16" (Center, 260" & 300")	3	69
	9C-506	Axle w/Bearings, 76-5/16" (Centers & 300" Wings)		72
	9D-114	Axle w/Bearings, 56-5/16" (260" Wings)	4	57
2	9C-014	Outer Bearing Housing	8	7
3	9C-015	Inner Bearing Housing	8	8
4	9C-016	Bearing	16	1.7
5	9C-031	Axle Clamp	8	3.7
	2D-535	Set Screw, 1/2"x1-1/4"	16	.1
6	9D-673	U-Bolt, 1/2"	8	.7
7	1C-109	Lock Washer, 1/2"		--
8	1C-390	Nut, 1/2"		--
9	8J-001	20" Notched Wheel		28
	8C-988	16-1/4" Notched Wheel		31
10	1D-927	16-1/2" Crowfoot Wheel		41
11	4D-108	Spacer, 2-1/16" (used with Crowfoot Wheels)		2.8
	2D-213	Spacer, 2-3/16" (used with Crowfoot Wheels)		3
12	8J-097	Center Bracket	2	14.5
13	8J-099	Angle	16	5.3
14	7J-990	U-Bolt, 5/8"	28	1.2
	1B-166	Lock Washer, 5/8"	56	--
	1C-392	Nut, 5/8"	56	.1
15	5D-051	Cap Screw, 1/2"x1-3/4" long	28	.1
16	9D-669	Straight Axle Mount	16	.9
17	9D-866	Drilled Bolt, 5/8"x6" long, Gr. 5	2	.6
18	1B-166	Lock Washer, 5/8"	14	--
19	4D-529	Slotted Nut, 5/8"	14	.1
20	2C-864	Cotter Pin, 1/8"x1"	14	--
21	8J-098	End Bracket	12	3.5
22	8J-913	End Bracket Support	12	10.3
23	9D-864	Drilled Bolt, 5/8" NC x 3 1/2", Gr. 5	12	.4
24	8C-527	Cap Screw, 1/2" NC x 1 1/2", Gr. 5	24	.1
25	9J-277	Spacer Ring	16	.2

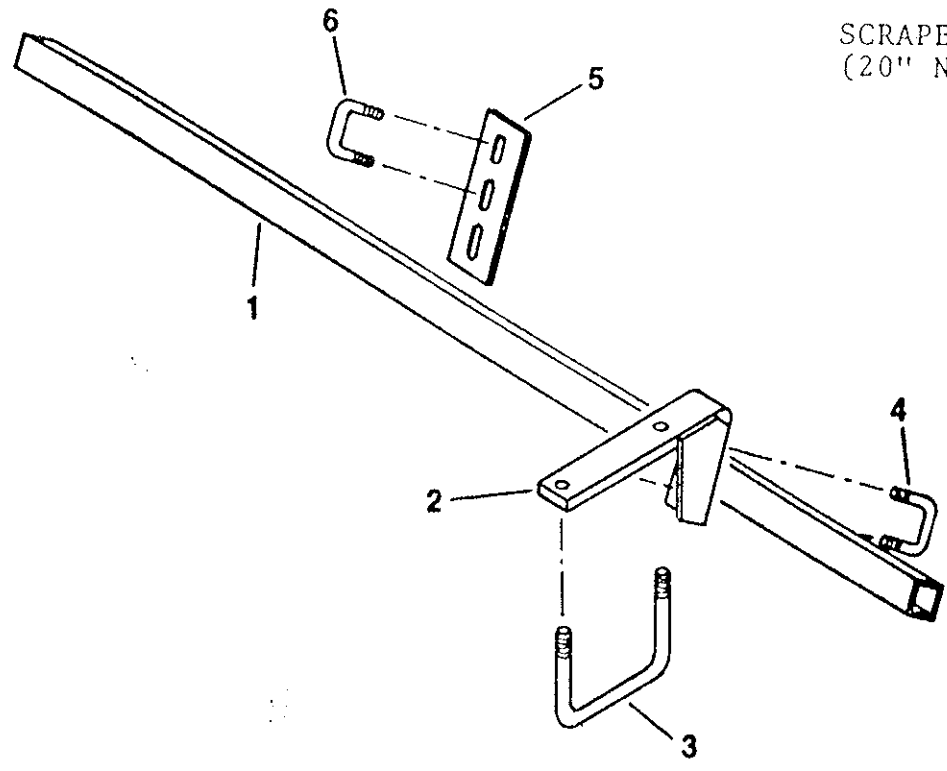
HYDRAULICS



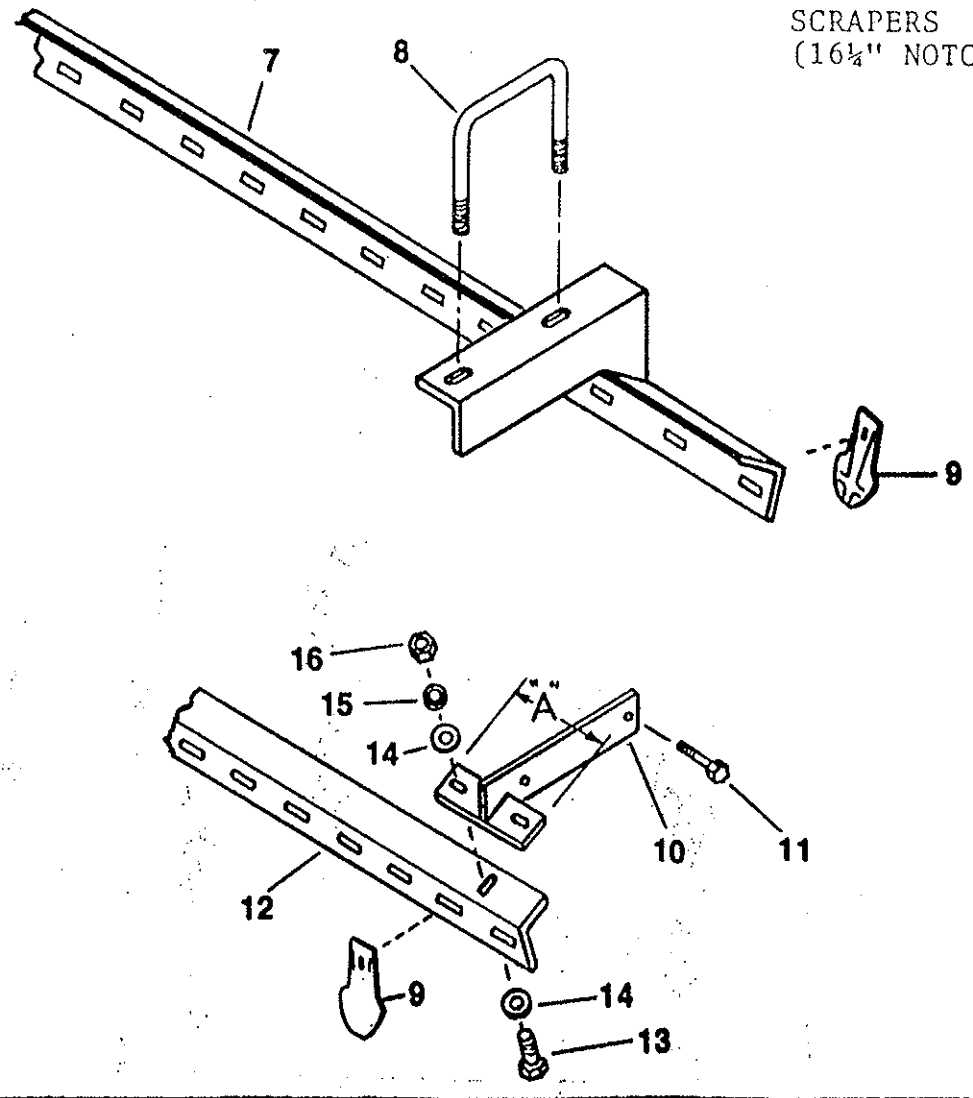
HYDRAULICS

Index No.	Part #	Description	No. Used	Weight
1	3J-818	Hydraulic Cylinder, 4-1/2"x16"	2	55
2	9D-524	Hydraulic Cylinder, 3-1/2"x16"	2	33
3	6D-725	Hydraulic Hose, 180"	2	6.9
4	9D-764	Hydraulic Hose, 96"	1	3.7
5	5J-566	Hydraulic Hose, 112"	1	4.6
6	1J-131	90° Swivel Fitting	4	.3
7	6D-716	Restrictor Fitting (1/16")	4	.3
	2J-864	Restrictor Fitting (1/32")	4	.3
8	6D-147	Cross Fitting	3	1
9	2J-528	Hydraulic Hose, 18"	1	1
10	2J-863	Hydraulic Hose, 38"	2	1.9
11	6D-140	Hydraulic Hose, 86"	2	3.4
12	8J-651	Breather	1	.5
13	4J-539	Hydraulic Hose, 84"	1	3.3
14	2J-749	Hydraulic Hose, 26"	1	1.4
15	6D-148	Nipple	1	.2
16	8J-650	Relief Valve (Appearance may vary)	1	2.5
*	9D-851	Plastic Cable Tie - 20"	2	--
*	3J-615	Plastic Cable Tie - 28"	10	--
		* Not Shown		

SCRAPERS
(20" NOTCHED WHEELS)



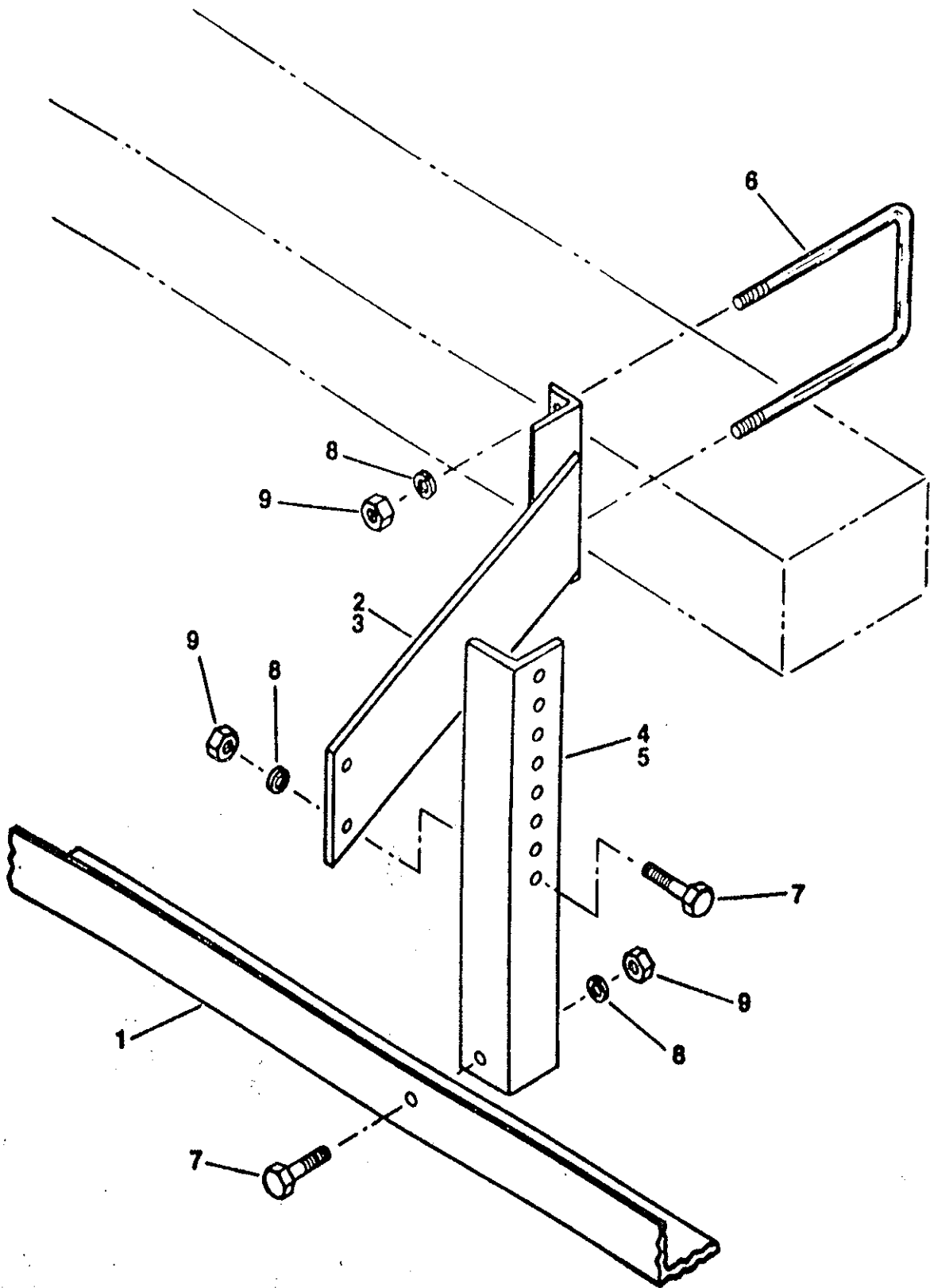
SCRAPERS
(16 1/2" NOTCHED WHEELS)



SCRAPERS

Index No.	Part #	Description	No. Used	Weight
<u>Items Used with 20" Notched Wheels</u>				
1	8J-77	Scraper Tube, 154" (Center Section)	1	40
	8J-656	Scraper Tube, 60" ("2601" Series Wings)	2	15.6
	8J-657	Scraper Tube, 80" ("3001" Series Wings)	2	20.8
2	8J-13	Scraper Bracket	7	6
3	7J-990	U-Bolt, 5/8"	7	1.2
	1B-166	Lock Washer, 5/8"	14	--
	1C-392	Nut, 5/8"	14	.1
4	5D-921	U-Bolt, 1/2"	7	.5
	1C-109	Lock Washer, 1/2"	14	--
	1C-390	Nut, 1/2"	14	--
5	8J-14	Scraper, 2-1/2" wide		1.3
	8J-79	Center Scraper, 3-1/2" wide	1	1.9
6	8J-15	U-Bolt, 3/8"		.2
	1C-182	Flat Washer, 3/8"		--
	1C-183	Lock Washer, 3/8"		--
	1C-277	Nut, 3/8"		--
<u>Items Used with 16-1/4" Notched Wheels</u>				
7	8J-168	Scraper Angle, 150 5/8" (Center Section)	1	99
8	7J-990	U-Bolt, 5/8"	3	1.2
	1B-166	Lock Washer, 5/8"	6	--
	1C-392	Nut, 5/8"	6	.1
9	2D-110	Scraper		1
	3D-627	Center Scraper	1	1.3
	3C-734	Carriage Bolt, 3/8"x1-1/2" long		.1
	1C-182	Flat Washer, 3/8"		--
	1C-183	Lock Washer, 3/8"		--
	1C-277	Nut, 3/8"		--
10	8J-671	Angle Bracket (Dimension "A" = 5-1/16")	2	3.3
	8J-674	Angle Bracket (Dimension "A" = 6-11/16")	2	3.7
11	1D-237	Cap Screw, 1/2"x2" long, Gr. 5	8	.1
12	8J-672	Scraper Angle, 59" ("2601" Series Wings)	2	30
	4J-3	Scraper Angle, 79" ("3001" Series Wings)	2	40
13	8C-527	Cap Screw, 1/2"x1-1/2" long, Gr. 5	4	.1
14	1C-120	Flat Washer, 1/2"	8	--
15	1C-109	Lock Washer, 1/2"	12	--
16	1C-390	Nut, 1/2"	12	--

LAND LEVELER



LAND LEVELER (OPTIONAL)

Index No.	Part #	Description	No. Used	Weight
1	9D-21	Leveler Angle, 160" (Center Section)	1	60
	9D-307	Leveler Angle, 47-3/4" ("2601" Series Wings)	2	12.5
	9D-752	Leveler Angle, 67-3/4" ("3001" Series Wings)	2	17.9
2	3J-552	L. H. Bracket (shown)	4	9.6
3*	3J-551	R. H. Bracket (opposite)	3	9.6
4	3J-557	L. H. Adjusting Angle (shown)	3	5.8
5*	3J-556	R. H. Adjusting Angle (opposite)	4	5.8
6	3J-561	U-Bolt, 1/2"	7	.9
7	8C-527	Cap Screw, 1/2"x1-1/2" long, Gr. 5	21	.1
8	1C-109	Lock Washer, 1/2"	35	--
9	1C-390	Nut, 1/2"	35	--
* Not Shown				

INDEX

Breakdown of hydraulic cylinders is in special insert section from book #2J-124, pages 9 and 23, and is located in back of this book. Pages marked "*" are from book #2J-124.

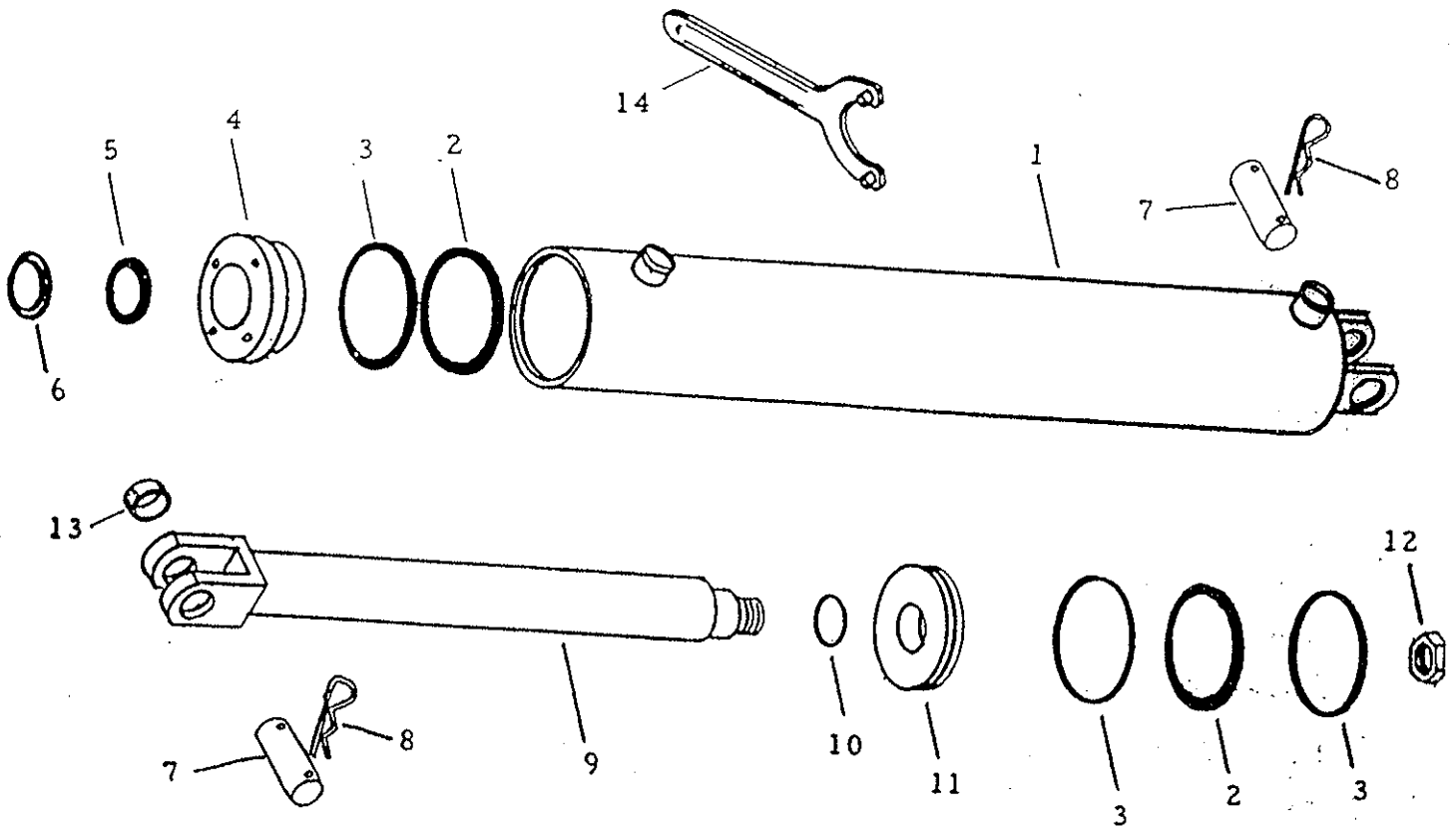
<u>Part No.</u>	<u>Page</u>	<u>Index No.</u>	<u>Part No.</u>	<u>Page</u>	<u>Index No.</u>	<u>Part No.</u>	<u>Page</u>	<u>Index No.</u>
1B-166	3	10	5C-480	11	11	6D-476	11	9
	5	11	5C-907	5	10	6D-716	15	7
	7	17	5C-913	11	15	6D-725	15	3
1C-023	11	3	5C-914	11	14	6D-865	5	6
1C-109	7	30	6C-400	5	15	6D-879	5	3
	9	31	6C-406	9	8	6D-944	5	4
1C-120	17	14	6C-750	9*	12	7D-014	7	26
1C-182	5	7	8C-527	13	24	7D-430	9	16
	7	16		17	13	7D-590	9	37
1C-183	5	7		19	7	7D-728	7	26
	7	16	8C-986	13	1	7D-730	7	26
1C-210	7	7	8C-988	13	9	9D-021	19	1
1C-211	7	6	9C-014	13	2	9D-114	13	1
1C-216	3	18	9C-015	13	3	9D-135	11	19
1C-232	5	7	9C-016	13	4	9D-307	19	1
1C-277	5	7	9C-031	13	5	9D-524	15	2
	17	6	9C-059	11	4	9D-653	11	2
1C-314	7	23	9C-506	13	1	9D-662	7	27
1C-354	3	22	1D-014	7	24	9D-669	13	16
1C-355	3	22	1D-237	17	11	9D-673	13	6
1C-390	7	31	1D-594	5	30	9D-752	19	1
	9	32		9	20	9D-764	15	4
1C-392	3	11	1D-927	13	10	9D-851	15	16
	7	17	2D-110	17	9	9D-864	13	23
1C-788	7	14	2D-213	13	11	9D-866	13	17
	9	23	2D-535	13	5	9D-989	9	11
	11	17	2D-894	5	24	1J-951	23*	12
1C-869	9	9	3D-627	17	9	1J-957	9*	1
	23*	8	4D-108	13	11	1J-958	9*	4
1C-871	5	23	4D-386	7	32	1J-959	9*	11
	11	16	4D-529	13	19	1J-960	9*	9
2C-458	7	13	4D-561	9	29	1J-961	9*	13
	9	24	5D-012	11	7	2J-094	7	17
2C-628	7	32	5D-051	13	15		9	30
2C-643	11	2	5D-110	5	27	2J-155	7	25
2C-864	13	20	5D-142	3	13	2J-241	7	22
3C-734	17	9	5D-335	9	36	2J-430	3	15
4C-446	5	5	5D-921	7	34	2J-431	3	15
4C-758	9	34		17	4	2J-528	15	9
4C-778	9	35	6D-140	15	11	2J-600	7	10
4C-856	9*	8	6D-147	15	8	2J-749	15	14
4C-858	5	29	6D-148	15	15	2J-751	3	22
5C-078	7	29	6D-284	11	16	2J-863	15	10
5C-100	11	20	6D-309	11	3	2J-864	15	7
5C-392	3	14	6D-333	5	8	3J-496	9	10
5C-460	5	9	6D-336	11	13	3J-498	23*	7
5C-461	5	9	6D-337	11	18	3J-512	5	31
5C-461	5	20	6D-338	11	10		9	4
5C-479	11	12	6D-355	3	20	3J-551	19	3

<u>Part No.</u>	<u>Page</u>	<u>Index No.</u>	<u>Part No.</u>	<u>Page</u>	<u>Index No.</u>	<u>Part No.</u>	<u>Page</u>	<u>Index No.</u>
3J-552	19	2	8J-593	3	6	9J-155	9	25
3J-556	19	5	8J-614	9	1	9J-159	9	27
3J-557	19	4	8J-630	9	28	9J-160	9	27
3J-561	19	6	8J-632	3	16	9J-163	9	22
3J-615	15	16	8J-637	9	5	9J-164	9	22
3J-675	3	21	8J-644	9	16	9J-165	9	26
3J-818	15	1	8J-651	15	12	9J-166	9	26
3J-880	5	2	8J-652	9	2	9J-168	9	21
4J-003	17	12	8J-653	3	17	9J-169	9	21
4J-410	9	3	8J-654	9	38	9J-170	7	8
4J-539	15	13	8J-655	9	38	9J-187	3	22
4J-549	5	32	8J-656	17	1	9J-277	13	25
5J-136	23*	1	8J-657	17	1			
5J-137	23*	4	8J-671	17	10			
5J-138	23*	9	8J-672	17	12			
5J-139	23*	11	8J-674	17	10			
5J-140	23*	14	8J-900	3	5			
5J-536	9	7	8J-903	5	14			
5J-566	15	5	8J-913	13	22			
5J-650	9*	7	8J-918	9*	13			
5J-768	5	26	9J-090	7	33			
	7	9		9	39			
6J-045	5	21	9J-091	7	33			
6J-275	5	28		9	39			
6J-459	5	18	9J-093	3	15			
6J-460	5	19	9J-096	7	16			
7J-067	9	19	9J-099	11	1			
7J-990	3	9	9J-100	11	21			
	13	14	9J-101	3	3			
	17	3	9J-102	3	4			
	17	8	9J-107	7	11			
8J-001	13	9	9J-108	7	18			
8J-013	17	2	9J-109	7	18			
8J-014	17	5	9J-110	7	19			
8J-015	17	6	9J-111	7	12			
8J-051	3	20	9J-112	7	4			
8J-077	17	1	9J-114	7	15			
8J-079	17	5	9J-120	7	16			
8J-083	5	25	9J-121	7	1			
8J-085	5	33	9J-126	3	1			
8J-086	5	1	9J-127	3	2			
8J-097	13	12	9J-131	9	33			
8J-098	13	21	9J-133	9	16			
8J-099	13	13	9J-134	9	16			
8J-104	5	16	9J-139	9	15			
8J-113	5	13	9J-140	9	15			
8J-118	3	12	9J-141	9	14			
8J-130	5	12	9J-142	9	14			
8J-163	5	17	9J-143	7	3			
8J-168	17	7	9J-144	7	3			
8J-172	7	28	9J-145	7	2			
8J-212	5	22	9J-146	7	2			
8J-570	3	7	9J-151	9	17			
8J-591	3	8	9J-152	9	18			

9D524 G Hydraulic Cylinder 3-1/2 x 16
 Hydraulic Gear #3516-01 Painted Green
 1-3/8 Dia. Rod, 26-1/4 Retracted, 42-1/4 Extended Length

Item	Part No.	Description	Qty.
1	1J957	Tube Assembly	1
*2	NSS	O Ring	2
*3	NSS	Back-Up Ring	3
4	1J958	Gland	1
*5	NSS	Rod Seal & Back Up Rings	1
*6	NSS	Wiper	1
7	5J650	Cylinder Pin	2
8	4C856	Pin Clip	4
9	1J960	Rod Assembly	1
*10	NSS	O Ring	1
11	1J959	Piston	1
12	6C750	Hex Nut 7/8-14 NF Lock	1
13	8J918	Tension Bushing	1
*	1J961	Seal Kit (Items marked "**")	2
14	5J133	Spanner Wrench (Optional - Disassembly Tool)	

NSS = Not Serviced Separately



3J-818 G Hydraulic Cylinder 4-1/2 x 16
 Hydraulic Gear #4516-01 Painted Red
 1/3/4 Dia. Rod, 26-1/4 Retracted, 42-1/4 Extended Length

Item	Part No.	Description	Qty.
1	5J-136	Cylinder Barrel	1
*2	NSS	O Ring	2
*3	NSS	Back-Up Ring	1
4	5J-137	Packing Gland	1
*5	NSS	Rod Seal	1
*6	NSS	Wiper	1
7	3J-498	Cylinder Pin	1
8	1C-869	Cotter Pin	1
9	5J-138	Rod Assembly	2
*10	NSS	O Ring	1
11	5J-139	Piston	1
12	1J-951	Hex Nut, 1-1/4 - 12 N.F. Lock	1
*13	NSS	Back-Up Ring	1
*14	NSS	Back-Up Ring	2
*	5J-140	Seal Kit (items marked "**")	2
15	5J-134	Spanner Wrench (Disassembly Tool)	

NSS = Not Serviced Separate

